



ORDINARY MEETING OF COUNCIL

ENCLOSURES

Tuesday 15 December 2015

TABLE OF CONTENTS

| ITEM | SUBJECT | PAGE NO |
|--------------|---|---------|
| 9.3 | Crooked River Coastal Zone Management Plan - Adoption of Plan | |
| Enclosure 1 | Submissions..... | 2 |
| 15.15 | South Precinct Meeting Minutes | |
| Enclosure 1 | South Precinct Meeting - Minutes - 19 November 2015 | 18 |
| 15.16 | Minnamurra Progress Association Minutes | |
| Enclosure 1 | Minnamurra Progress Association Meeting Minutes - 3 November 2015..... | 20 |
| Enclosure 2 | Minnamurra Progress Association Meeting Minutes - 1 December 2015..... | 22 |
| 15.27 | LEP Review Committee - Minutes 1 December 2015 | |
| Enclosure 1 | Minutes - 1 December 2015 | 24 |

From: Dale Dumpleton
To: Council Mailbox
Subject: Draft Crooked River Estuary Management Plan
Date: Thursday, 22 October 2015 7:36:57 PM

22 October 2015

Mr M Forsyth
General Manager
Kiama Municipal Council

Dear Mr Forsyth

**Submission regarding the Draft Coastal Zone Management Plan
for the Crooked River Estuary**

I am a long term resident of Gerroa and my interest in the Crooked River stems from my desire to see its natural beauty and cultural values protected and ensure others have the opportunities to use and explore the river.

I have read the recently released draft Coastal Zone Management Plan for the Crooked River Estuary (July 2015) and found it comprehensively sets out the issues and threats to the river and provides ways to address these. For instance, the demonstration reach concept (Section 6.10 of the plan) is notable and I look forward to its implementation. There are some issues I wish to pick up on and these are detailed as follows:

Launch ramps, landing platforms and bird hides

Community use (Section 7) of the river could be better managed and improved and also complement some of the actions set out in the plan by building:

- - Launch ramps (Action 4.4) to provide easy egress and protect bank erosion. River bank erosion is an issue and as noted in Section 6.4 “(s)ome causes could be related to the removal of emergent ... vegetation to access areas of the creek for recreational purposes”. Ramps would help eliminate this particular problem. The section on navigation (7.3.2) notes one informal ramp near the Council owned Caravan Park should be ‘properly’ constructed along with one near the bridge. The caravan park actually has a sandy ramp on Blue Angle Creek and another on the river. Some of the expense to properly construct these should come from caravan park revenue;
-
- - Landing platforms in the upper reaches to link future land based activities to bird hides (and possible walking trails) and mitigate against erosion;
-
- - Bird hides adjacent to the landing platforms to complement the river experience; and
-
- - Buffer zones along the river to protect vulnerable areas from unnecessary intrusion by boaters (Action 3.6 refers specifically to stock)

Action 4.4 gives a low priority to ramps but when considered in conjunction with other actions warrant a higher rating. Action 2.1 ranks erosion control measures in Blue Angle Creek as high and Action 3.6 ranks bank erosion control for the Crooked River as high.

All of these suggestions should have a high rating because they improve the amenity of the area for tourists and locals and at the same time protect against bank erosion.

Aboriginal Heritage

The section on Aboriginal heritage (7.4.1) notes “(s)ections of the WRP

have been preserved from development to protect and conserve these (aboriginal) sites' and goes on to discuss possible climate change impacts.

It is suggested that those sites which sit on the river should be signposted with information plaques providing details about local aboriginal heritage, provided it is considered appropriate by the local Aboriginal Land Council.

Conservation and protection of the sites should be ongoing and should be on any committee's agenda.

Management Plan - Oversight and membership

It is not clear to me who is responsible for the management plan of the river.

The draft plan discusses an agency and landholder committee (Section 8.5) but only gives it a medium priority. If the committee is to provide direction and monitor outcomes then it should have high priority.

There should also be provision for other stakeholders including local indigenous communities on the committee. Throughout the draft plan there are references to the importance of the river to those who use it so any committee should include not just those who own land surrounding the river.

Management Plan - Key strategic areas

I would like to see the so called agency and landholder committee having responsibility for monitoring the five management areas (Section 2).

I trust this will be useful.

Yours sincerely

Dale Dumpleton (Mrs)

65 Headland Drive, Gerroa 2534

Item 9.3

Enclosure 1

Gerroa Environment Protection Society

PO Box 71 Jamberoo
15/10/15

Please consider this submission to the Draft Coastal Zone Management Plan for Crooked River.

The Gerroa Environment Protection Society would like to congratulate Kiama Council for undertaking the Coastal Zone Management Plan for Crooked River. We are particularly pleased to see this Plan recognise the need to plan for climate change impacts.

This submission raises a number of issues and recommendations in relation to the CRCZMP intention to identify new and ongoing threats to the health of the Crooked River estuary and to manage pollution, erosion, terrestrial and aquatic biodiversity and climate change impacts.

Background:

The Gerroa Environment Protection Society

The Gerroa Environment Protection Society was formed in 1989 in response to the clearing of Baileys Island, Gerroa and the ongoing clearing of vegetation in association with sandmining at Seven Mile Beach. During this time around 80 hectares (mainly EECs) have been cleared east of Blue Angle Creek and on Baileys Island.

Our Society has undertaken a large land care project (20,000 trees) between 2003 and 2006 to rehabilitate the riparian vegetation and improve vegetation connectivity near the saline wetlands at the western side of Baileys Island and Crooked River.

One of our primary objectives has been to educate the community about the unique ecological values and threats to the vulnerable Seven Mile Beach ecosystem.

Ecological Values of Seven Mile Beach

The unique vegetation association of an unusually large number of Endangered Ecological Communities at Seven Mile Beach is mainly a product of an extraordinary hydrological system that isn't replicated elsewhere in NSW. This freshwater hydrology includes:

Coomonderry Swamp, which is outside the scope of this Plan, covers an area of approximately 670 hectares and represents 40% of coastal freshwater wetlands in the State, and 90% of this wetland type on the south coast.

Foys Swamp covers an area of 120 hectares and drains along Blue Angle Creek to Crooked River. This unprotected freshwater swamp, although cleared and modified by drainage canals, retains its soil profile and some hydrological functions. Fragments of Swamp Sclerophyll Forest exist at its margins and are threatened by hydrological changes, including changes to groundwater profiles.

At the north western end of the beach are small freshwater and saline wetlands associated with Blue Angle Creek and Crooked River.

Seven Mile Beach National Park is part of a disconnected island of vegetation. Isolation from adjoining vegetation makes it vulnerable to species loss. The koala was last recorded in 1980 and the Greater Glider is under threat due to clearing and fragmentation of the blackbutt dune forest associated with sand mining. Preventing further fragmentation and loss of vegetation and developing habitat corridors is imperative to the survival of fauna of Seven Mile Beach.

Issues and recommendations

In this submission we wish to propose the following issues for consideration:

1. The need to protect and monitor threats to Endangered Ecological Communities (EECs) posed by potential changes to groundwater movement resulting from dredging activities in the current sand mine.
2. Identification of habitat corridors as priority areas for investment.
3. Recognition of the hydrological significance and need to rehabilitate Foys Swamp.
4. Small map labelling adjustments.

The need to protect and monitor threats to EECs posed by potential changes to groundwater movement resulting from dredging activities in the current sand mine.

The draft Plan (page 51) states: Cleary Brothers undertakes monthly groundwater level monitoring and quarterly analyte testing in line with their development consent conditions. We are concerned that no one is monitoring this monitoring program. We would like to see the Plan acknowledge established threats to EEC Swamp forests associated with potential groundwater changes in the sand mine dredge pond and highlight the need to monitor and address any groundwater movement changes.

Potential threats to Endangered Ecological Communities resulting from possible groundwater movement changes due to sand dredging has been established in the Land and Environment Court case; Gerroa Environment Protection Society Vs Minister for Planning and Cleary Bros.¹

In the LEC judgement Judge Preston stated: *"the proposed extension of the dredge pond also has the potential to have indirect effects. The dredge pond has the potential to impact on groundwater, changes which might in turn affect vegetation communities that are dependent on ground water, such as Swamp Sclerophyll Forest to the west of the existing dredge pond"*. This statement was in response to all proponents in the case (including the Department of Planning and Cleary Bros) finally agreeing that evidence present by GEPS indicated that the sand mine dredge pond cut across two distinct water tables and had the potential to merge the two, thus influencing groundwater flows.

Judge Preston set down conditions of consent to ensure groundwater movement was monitored and if changes were detected sand extraction is to be halted while further investigations and any necessary remedial action is undertaken.² Such remedial action is to include implementation of a predetermined remedial action plan set out in conditions 11 (d) and 14 ³(appendix 1). We would be happy to provide copies of this judgement and conditions if required.

As possible groundwater movement is a new and ongoing threat to the terrestrial biodiversity which could effect the health of the Crooked River estuary, it should be identified in the Plan along with strategies to periodically review groundwater movement and ensure the remedial action plan is undertaken in the event that changes to groundwater movement is detected.

¹ (11. Page 4 - Land and Environment Court - Gerroa Environment Protection Society Vs Minister for Planning and Cleary Bros (file no 10801 of 2007)

² Mangement & Monitoring - condition 14 - Gerroa Environment Protection Society Inc v Minister for Planning and Cleary Bros (Bombo) Pty Ltd (No 2) [2008] NSWLEC 254

³ Mangement & Monitoring - condition 11 (d) - Gerroa Environment Protection Society Inc v Minister for Planning and Cleary Bros (Bombo) Pty Ltd (No 2) [2008] NSWLEC 254

Identify habitat corridors as priority areas for investment.

We would like to see recognised habitat/biodiversity corridors identified in the Draft Plan, as they are critical for managing terrestrial biodiversity in the Crooked River catchment. Because of the importance of establishing these corridors we would also like to see them included as priority areas for investment.

The Draft Illawarra Growth Plan (appendix 2 & 2a), Illawarra Regional Strategy (appendix 3) and SRCMA corridors (appendix 4), all identify habitat and biodiversity corridors within the Draft Plan catchment. These corridors are significant in managing terrestrial biodiversity because Seven Mile Beach vegetation is disconnected from escarpment and coastal forests and sand mining and other activities have led to vegetation fragmentation. Fauna biodiversity has declined and some species are under threat because ecologists have indicated the area of habitat isn't considered large enough to sustain them. The koala has been lost and the Greater Glider habitat has been reduced to unsustainable levels⁴.

These identified habitat corridors link Seven Mile Beach National Park, through Foys Swamp, with escarpment forests (appendix 4). They connect with the Berry Wildlife Corridor, which is recognised in the South Coast Regional Conservation Plan and the Southern Rivers Catchment Action Plan, and forms part of the South Coast Regional Strategy and is one of ten biodiversity corridors identified in the Shoalhaven to Illawarra sector of the Great Eastern Ranges Initiative.

Recognition of the hydrological significance and need to rehabilitation Foys Swamp.

Foys Swamp is part of the catchment for Blue Angle Creek. Historically it was a basin that collected and redistributed surface run off, recharged ground water and provided a habitat for wetland vegetation and fauna species. The historic clearing and draining of this wetland has led to loss of habitat and biodiversity, acid sulphate leaching and increased intensity of water flows with associated sedimentation and erosion down Blue Angle Creek. The periodic clearing of drainage canals in Foys Swamp is most likely associated with acid sulphate contamination of Blue Angle Creek when it coincides with high rainfall and this has been ongoing.

Of all ecological systems wetlands are the easiest to rehabilitate. The benefits of investing in restoration of the hydrological regime and re-establishing wetland vegetation would be immense:

1. It would reduce acid sulphate contamination down stream because periodically exposed acid sulphate soils would be covered - it would also reduce acid sulphate contamination associated with stream bank erosion, as water flows would be more gradual.
2. The water retention capability of the wetland would be enhanced.
3. Intensity of water flows down Blue Angle Creek would be reduced
4. Sedimentation of Crooked River would be reduced due to reduced intensity of water flows
5. The natural regime of recharging groundwater would be restored
6. There would be greater mitigation of downstream flooding.
7. Aquatic biodiversity would be enhanced due to better water quality
8. Terrestrial biodiversity would be enhanced due to reestablishment of swamp vegetation and strengthening of habitat corridors.
9. Potential increasing threats associated with increased intensity and frequency of storm events associated with climate change would be ameliorated to some extent due to improved hydrological functions of the wetland.

It is understood that this modified wetland has agricultural values and is located on private land. We believe that overall hydrological and biodiversity improvements would however outweigh the agricultural values given the improved biodiversity and hydrological outcomes. An aspirational goal to rehabilitate the wetland, if an opportunity arises in the future, could result in the most significant improvement to the health of the catchment.

⁴ Garry Daley, Gaia research

The current Crooked River Estuary Management Plan states "Identify Foy's Swamp as a significant freshwater wetland worthy of conservation". We would like to see the inclusion of a statement in the CRCZMP to not only conserve but to also seek opportunities to rehabilitate this swamp, if an opportunity to do so arises in the future. Words similar to: *The rehabilitation of Foy's Swamp would have a significant benefit to aquatic and terrestrial biodiversity, improve hydrological functions of Blue Angle Creek, reduce pollution and sedimentation to Crooked River and assist flood mitigation downstream. Given the predicted increasing threats, associated with climate change, rehabilitation of this wetland would reduce social, economic and environmental impacts of increased flooding and sedimentation and minimise biodiversity loss associated with rapidly changing habitats.*

Small map labelling adjustments

Figure 1. There has been a history of referring to the part of Blue Angle Creek beyond the floodgates near Foy's Swamp as a *drainage canal*. This upper section of the creek isn't highlighted in the map in fig 1. Although its upper reaches have been modified, its source is Foy's Swamp and it follows the original creek line. As this is an often-disputed area and its riparian values have been disputed, it would be more accurate to indicate the full extent of Blue Angle Creek in the map in figure 1.

Figure 18. There is an area containing two small distinct areas of EEC Swamp Mahogany and Swamp Oak forests to the north of the identified Bangalay sand forest (see map below, indicated in pink). It would be more accurate to include these small wetland forests in the map, particularly as they correspond with a sand resource and their values could be disputed in the future. This area is identified as low-lying in Figure 3- the tidal inundation map.



Fig. 18. The labelling on the map identifies a wrong EEC and is inconsistent with the listed EECs on page 62; *Swamp Mahogany – Paperbark Forest* should be labelled *Swamp Sclerophyll Forest on Coastal Floodplains* on fig.18.

Map on page 138 - Crooked River estuary 2012

The notes below the map could acknowledge the successful land care work carried out by GEPS below the saline wetlands (appendix 5.)

Please consider the following recommendations

1. The Plan acknowledge established threats to Endangered Ecological Communities associated with potential groundwater changes within the sand mine dredge pond and highlight the need to monitor and address any groundwater movement changes if they occur.
2. The Plan identifies and includes recognised habitat/biodiversity corridors and include them as priority areas for investment.
3. The Plan recognise the hydrological significance and potential of Foy's swamp to enhance aquatic and terrestrial biodiversity and hydrological functions within the catchment and recommend its rehabilitation if an opportunity arises.
4. The minor map adjustments outlined be considered.

Howard H Jones (Secretary GEPS)
email: hhjones@westnet.com.au

Appendix 1.

Gerroa Environment Protection Society Inc v Minister for Planning and Cleary Bros (Bombo) Pty Ltd (No 2) [2008] NSWLEC 254

Condition of Consent:

Management and Monitoring

11. The Proponent shall prepare and implement a Water Management Plan for the project to the satisfaction of the Director-General. This plan must: --

(a) be submitted to the Director-General within 3 months of the date of this approval;

(b) be prepared in consultation with the DWE and DECC; and (c) include a:

· Erosion and Sediment Control Plan;

· Surface Water Monitoring Program;

· Ground Water Monitoring Program; and · Acid Sulfate Soils Management Plan.

(d) include a strategy for the placement of high hydraulic conductivity material progressively during the works. High conductivity material is to be placed at intervals along the length of the pond extension. This material is to be of a hydraulic conductivity, and placed at such intervals and in such places, that will maintain comparable typical groundwater flow through

14. The Ground Water Monitoring Program shall include: (a) a statistical analysis of baseline ground water level and water quality data; (b) ground water impact assessment criteria, including criteria for assessing any impacts on ground water dependent ecosystems and vegetation; (c) a program to monitor: · hydraulic conductivity – upon the completion of the landscaping of each 20 metre wide extraction zone, tests shall be conducted to ensure that the hydraulic conductivity following the placement of material is similar to the conditions prevailing prior to excavation commencing; · impacts on ground water dependent ecosystems and vegetation (from at least 6 boreholes at the edge of the dredge pond); and · water levels (at no less than monthly intervals and taken on the same day) in the dredge pond, the drain at the flood gates, monitoring bores WM1, WM1A, WM2A, WM3A, WM4, WM5, 1/Aug07, 2/Aug07, 3/Aug07, 4/Aug07, 5/Aug07 and 6/Aug07 (locations shown on Drawing 6198/208bh Revision A prepared by KF Williams & Associates, 15/2/08), and any additional bores installed at the edge of the dredge pond;

· the in situ strata at the perimeter of the dredge pond for its current hydraulic conductivity; and · groundwater levels under the SSF.

(d) monthly review of the results of the ground water monitoring by the Proponent's Environmental Officer; (e) a protocol for the investigation, notification and mitigation of any identified exceedances of the ground water impact assessment criteria. The protocol shall include the following measures to be undertaken in the event that the water level in any bore lies outside the range of two standard deviations from the mean for more than 6 months and does not follow a trend that can be attributed to climatic effects, as evident in other monitoring bores, undertake the following actions:

· sand extraction shall be halted immediately while further investigations and any necessary remedial action are undertaken; · additional water level measurements shall be taken in temporary bores in the vicinity of the affected bore to confirm the ground water levels in that locality; · a qualified hydrogeologist shall be engaged to assess the significance of the variance from expected ground water behaviour; · if the review of the hydrogeologist considers that action is necessary to maintain the pre-existing ground water regime in the vicinity of the SSF he/she shall be requested to recommend an appropriate remedial action plan. This plan may include adjustment to the placement strategy for panels of high hydraulic conductivity material required by Condition 11(d); and · the recommended remedial action plan shall be submitted for the Director-General's approval and subsequently implemented by the Proponent; (f) include measures to mitigate, remediate and/or compensate any identified ground water impacts.

Appendix 2.

Illawarra Growth Plan - Biodiversity Corridor (Foy's Swamp)



Item 9.3

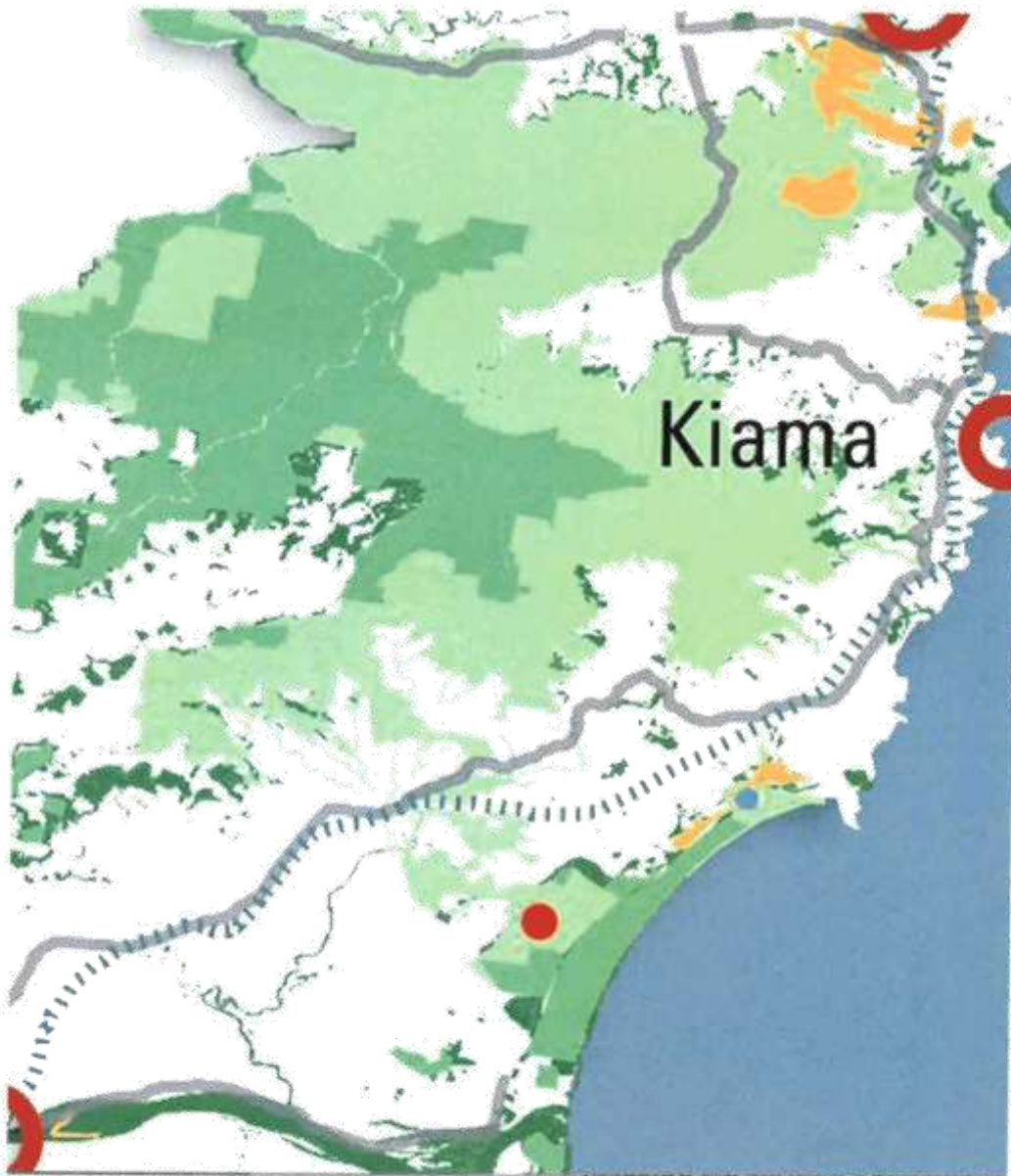
Enclosure 1

Appendix 2a.

Illawarra Growth Plan - Detail of Biodiversity Corridor in appendix 2.

- Foys Swamp corridor indicated by red dot

- A corridor to the north is also indicated as this assists the connectivity of fragmented forests - indicated by blue dot



Appendix 3.

Illawarra Regional Strategy - indicative habitat corridor across Foys Swamp (red dot indicates Foys Swamp)



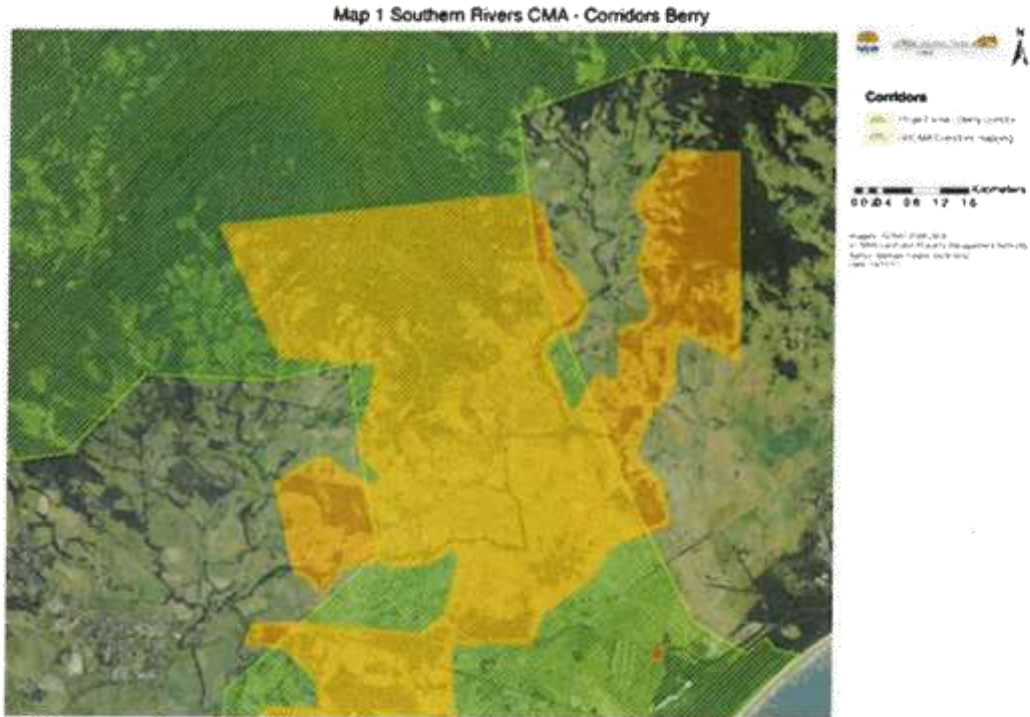
Item 9.3

Enclosure 1

Appendix 4.

Southern Region Catchment Management Authority - corridor across Foys Swamp (red dot indicates Foys Swamp)

This map also indicates the Berry Corridor that connects south to the Foys Swamp area)



Item 9.3

Enclosure 1

Appendix 5.

GEPS landcare project - Google maps 2015 – between 2003 and 2006 20,000 trees were planted.



Mr B Petchler
Mayor
Kiama Municipal Council
Manning St
Kiama 2533

Dear Mr B .Petchler:

Submission to the Draft Coastal Zone Management Plan for the Crooked River Estuary dated July 2015

I refer to the abovementioned plan and confirm my wife and I are the owners of 98 Crooked River Rd Gerroa which is currently subject to DA # 10.2011.316.1.

During discussions with Mr Rod King on 12 November 2014 at the council's offices regarding the abovementioned DA and in particular discussions surrounding storm water management, Mr King advised that it is a Council mandatory requirement for all new developments to have a positive drainage system connected to the Council's own positive drainage system.

While I have not pursued this issue further since my meeting with Mr King (and it is possible that councils requirements may have changed since this meeting), I have somewhat struggled with the logic of this mandatory requirement for the following reasons;

1. Currently, stormwater that is generated from our block that does not infiltrate on our block flows naturally over the surface to the neighbouring blocks. The surfaces of our neighbour's blocks are generally a combination of lushly grassed and/or vegetated areas.
2. As this potentially nutrient laden stormwater passes through our neighbours blocks, it would seem reasonable to surmise that some of this stormwater has the opportunity to infiltrate on the adjacent blocks. Further, some of the nutrients held within this surface flowing water are also afforded an opportunity to be retained before the surface flowing water may eventually reach the councils positive stormwater system that then discharges to Crooked River.
3. While accepting that any development we might undertake on our block will generate additional run-off over and above the current volumes from an increase in roof area (I understand that it is a council requirement to retain and reuse roofwater) and hard surfaces (which I understand needs to be detained before release to the council stormwater system) the mandatory requirement to positively connect our block to the council stormwater system will surely result in an overall increased stormwater and nutrient load being delivered to Crooked River as all run off that is not retained on site for reuse will eventually be deposited directly into Crooked River with the opportunity then removed for infiltration of stormwater and retention of nutrients on adjacent blocks to occur.

I would therefore request that Council give consideration to the removal of this mandatory positive drainage connection requirement on the understanding that a properly engineered stormwater management system is developed for the site that combines retention/reuse and detention with an overall objective of not increasing the current baseline volumes of natural surface flows to our neighbours with the need for positive stormwater connections to Crooked River only being pursued as a last resort rather than it being a mandatory requirement.

ML
12/10/15

October 12, 2015
Page 2

I would suggest that this approach will afford the best opportunity of ensuring that the volume of stormwater and quantity of nutrients delivered to Crooked River from our development (and in fact for any other developments that occur in the future in Gerroa) is reduced to as low as reasonably practicable.

I look forward to receiving your response and if possible, having a discussion with council's development/engineering staff on this matter at a time of your/their convenience.

Sincerely,



Mike Crandell

0458855700

MINUTES OF THE SOUTH PRECINCT Meeting

held on Thursday 19 November 2015 at Gerringong Town Hall

Meeting Opened at 7.30pm

Attendance: 30 present with Darrell Clingan in the Chair. The Mayor, Brian Petschler was welcomed to the meeting

Apologies: Peter Wheeler, Debra Moore, Warren Holder

Minutes of the meeting of 15 October 2015 were taken as read and confirmed. Moved
Albert Stein/Howard Jones Carried

The Mayor: gave a comprehensive power point presentation to the meeting regarding Kiama Council ability to satisfy the requirements of the State Governments" Fitness for the Future" amalgamation strategy, he answered questions from the floor. It was noted that some Sydney Councils have voted to become mega-councils but Kiama Council has no wish to merge with any other councils. The Mayor expressed his confidence that Kiama Council is well able to face the future financial challenges with a number of internal changes.

Business arising from the minutes

- **Highway Noise** – Email sent to Gareth Ward about the problem. Response that further monitoring will be done when the final sealing of the Highway is complete in late December 2015
Bill Pople reported that a special surface being applied to the roadway
- **Kiama Council** – re 98 Fern St.
- **Letter re Public Access re 242 Fern St.** Notice received too late to register for public access
-
- **Flooding of Fern Street:** Brian Whittaker has met on site with the Precinct delegation. The concrete causeway across the canal just East of the new bridge appears to be causing water to back up during heavy rain. Council will negotiate with the landowner to replace it with a second-hand timber bridge which Council has available.
- **KMC – Replacement of Bridge over Union Creek.** Work is proceeding. Belinda St is closed until 16 December A temporary pedestrian bridge is in place

Correspondence- In

-

DAs - 242 Fern St – application by Inghams family has been rejected by Council as it does not meet requirements

- 98 Fern St. DA will probably be considered by Council in December or February.
- Howard Jones reported that DAs tracking software is about to be upgraded.

Reports

Neighbourhood Watch – Bill Popple. Break and enters – 2 at Gerringong, 2 at Gerroa
A number of traffic infringements issued

General Business

- **Loose ferocious dogs.** Michael Hindmarsh reported on the problem of loose ferocious dogs in his area.
- **Fitness Groups at Cooke Park (Boat Harbour)**
Motion - That we point out the problem of fitness groups using the area being in conflict with other users and ask Council to investigate the suitability of Cooke Park for that purpose.
Moved Jim Eames/Alma Macpherson Carried

Next Meeting: 17 December 2015 at Gerringong Town Hall 7.30pm

Meeting closed at 8.53pm

Darrell Clingan Chairperson.....

Graham Fairbairn Secretary

Minnamurra Progress Association
Minutes of 3 November 2015

Present

Cliff Mason
John Le Bas
Norma Gore
Glenda Foster
Kath Le Bas
Rae McClymont
Ian Dodsworth
7 Present

Apologies

David Probert
Wendy Hooper
Stephen Nall
Vicki Steele
Carl Ellefsen

President Cliff opened the meeting and welcomed everyone to the meeting and **Previous Minutes**

The minutes of the previous meeting minutes were taken as read and passed as a true record.

Arising

Cliff reported on the very good presentation by the SES people last meeting particularly on the mechanism of issuance of flood warnings. It was noted that work to demolish the existing Gerra Dam and the creation of a wetland had been completed. This is of course no guarantee of freedom of potential future flooding in the Minnamurra spit area.

Bins overflowing in Tennis Court area during holiday times.

Comment was that whilst Council was conscientious in keeping bins empty over weekends it was not possible to cope with the overflow in peak holiday periods. In discussion it was noted that only a couple of standard size bins were available and these were of the tethered type typically placed by Council. Placement of more and segregated bins would require an extension of the existing placement and a higher level of clearance over popular weekends. This would be a suitable topic to raise in the next visit of Senior Council Members and staff. It was noted that bin overflow in domestic bins was generally not noted except occasionally with the fortnightly collected red bins.

In the same area the problem of weekend parking in popular weekends was raised. The view was that sufficient area existed in the tennis court playground area to provide more parking spaces without cramping the existing users. Again a topic for the proposed visit by Council Officers.

Correspondence

A letter was received concerning "**Dementia Friendly Kiama Project**"

Council has appointed a Dementia Friendly Project Officer Melissa Andrews and has requested Progress nominate a member or members to be trained as Dementia Friends. Members present would like to know more about this project and whether it has been pressed on Council by higher government bodies. Again another matter to raise with Council but perhaps not a function of Progress.

General Business

Railway Parade Minnamurra Railway Station Area

P1

Rae noted that with increased use by buses along Railway Parade South end accessing Minnamurra Railway Station that there was consequent break up of the road surface. It is doubtful that this road was ever designed for other than light domestic transport and if its loading is to incorporate bus traffic regularly maybe more than regular resurfacing is necessary. Other than routine pot hole repair which is probably already programmed the matter should also be raised in the proposed Council visit.

Secretary Replacement

The current secretary has occupied the position for considerably over 10 years and a replacement is required. There was considerable discussion mainly centred on the same difficulty in obtaining honorary officers in organisations that do not seem to attract people in the say 45 – 65 age group who are generally well equipped and eager to fill those positions. The quest will continue even if a split function (not recommended) has to be created.

Treasurers Report

Assets \$1977.82 after payments of \$454 mainly for public risk payments via the school

General Business

Next Meeting – 7.30 pm 1 December 2015

Christmas Meeting Bring a Plate.

Minnamurra Progress Association
Minutes of 1 December 2015

Present

Cliff Mason
John Le Bas
Norma Gore
Glenda Foster
Kath Le Bas
Rae McClymont
Ian Dodsworth
Carl Ellefsen
Ray Smith

Jo Swain
David Probert
Wendy Hooper
Andrew Wilson
Trish Wilson
Jo Swain

15 Present

Apologies

Val Mason
Bruce Cole
Cederic Miller
Joan Miller

President Cliff opened the meeting and welcomed everyone to our Christmas Meeting. Norma reported the death of Minnamurra identity Jimmy Boxwell who passed away on 15 Nov aged 94. A card from Progress was sent to Mrs Boxwell.

Previous Minutes

The minutes of the previous meeting minutes were taken as read and passed as a true record.

Arising

There were a number of matters which arose requiring attention from Council. They included the following

Overflowing bins in the park areas along the riverfront, particularly at weekends

Parking congestion also mainly at weekends and holiday periods.

Bus traffic along Railway Parade largely servicing railway outages is taxing the road surface which was probably only designed for domestic traffic.

The above list could probably be best handled by a visit from a Senior Council Officer or Councillor and Sec will draft a letter covering the last two minutes and include an invite to Council to address Progress on matters of local concern and other matters that Council may wish to raise of community interest.

Treasurers Report

Assets \$1977.82 after payments of \$454 mainly for public risk payments via the school. Was read and passed Prop Glenda Sec Ray

Sec Replacement

Still not resolved and Pres pursuing.

LEP Review Committee

Pres Cliff presented a report on meetings and discussion of the above committee mainly directed at council building design and permit procedures under the LEP.

This report generated considerable discussion and it was obvious that domestic building approval was a very contentious matter. The following points were made by some members:-

- Become overly bureaucratic over recent years.
- Extremely expensive both by Council fees and reports required from private consultants.

P1

Item 15.16

Enclosure 2

- Time taken was excessive and some members suspected that ratepayer paid time was of little concern to Council employees paid by time not productive output.
 - Suspicion that project builders with a vast array of specialist staff receive preferential approval procedures not available to small projects and demand and get much better treatment.
 - Suspicion there was conflict between the dictates of State Government wishing to expedite faster building processing due to population growth and Local Governments defensive of their disparate and perhaps unnecessarily complicated procedures.
- Maybe an item Council may care to address in a future address to members.

Estuary Committee

Pres Cliff reported that there had been no recent committee meetings. Graeme reported that a "work for dole" group had been bussed in 4 days a week to clear rampant asparagus bush from the North end of Minnamurra adjacent to the railway Bridge area. His observation was that they had the necessary skills to properly remove the roots and just not the water bottles associated with this feral pest. Cliff will call Byron to update on current position.

Tennis Courts

Kath raised a wattle tree branch blown down and now resting behind the tennis court enclosure and covering newly planted bushes.

Train Services Kiama Bombaderry.

Carl reported that Gareth Ward was in the process of advocating (through a petition) increasing the number of train services from Kiama to Bombaderry. It is believed that the service only coordinates with only every second service from Sydney to Kiama. The Member for Nowra is expected to support this initiative.

Raffle Prizes

Norma for many years has provided the basic revenue raiser for Progress by running the monthly raffle with prizes (\$5 Max). She now requires more prizes to keep the raffle running. Members please help!!

Speeding Boats on River

Riverside resident Graeme reports that there are many instances of excessive (>4knots) speed by powered vessels on the river. As it is also a popular swimming venue he believes that it is inevitable that there will be a serious injury or fatality soon. Naturally the policing of the river by RMS and very punitive fines would probably curtail the activity. However it was reported by Andrew that a verbal request had been met with the response that RMS has many much more dangerous waterways to patrol and that if possible photographic evidence by riverside dwellers should be taken and RMS could then take punitive action. Also an event experienced by Cliff indicated that RMS is not totally inactive. Also it was reported that there was activity possibly associated with Estuary Committee consultants. They also could report on undesirable activity during their time in the river. Cliff to pursue with Gareth Ward.

At the conclusion of the meeting Members enjoyed a hearty Christmas Supper where best wishes for a Happy Christmas and Prosperous New Year were exchanged.

General Business

Next Meeting – 7.30 pm 2 February 2016 Possible Council speaker(s)_

Minutes of the LEP Review Committee meeting held on Tuesday 1 December 2015 at Kiama Council, Commencing 11:00am

Present: Councillor Dennis Seage (Chair) Councillor Andrew Sloan, Councillor Kathy Rice, Patrick Mahedy (Economic Development Committee), Leonardo Murgio (Health and Sustainability Committee), John Friedmann (Jamberoo), Cliff Mason (North Kiama/Kiama Downs/Minnamurra), Stuart Dixon (Kiama Development Industry Committee), Michael Forsyth (General Manager), Kim Bray (Manager of Strategic Planning), Phil Costello (Director of Environmental Services) and Deborah Boles (Executive Assistant)..

Apologies: Mayor, Councillor Brian Petschler, Mark Hitchcock (Kiama), Sandra McCarthy (Gerringong/Werri Beach/Gerroa).

2. Matters Arising from the Minutes

It was noted that there was not a quorum for the last meeting held on 29 September 2015. The committee recommended that the minutes from this meeting be adopted as recommendations from this committee.

Moved: Councillor Andrew Sloan
Seconded: Patrick Mahedy

3. Presentation by Patrick Mahedy

Patrick gave a presentation on medium density options and density yield calculations using a property in South Kiama Drive, Kiama as an example (see attached sheet).

Recommendations:

1. Staff to come back to the Committee with suggestions on "how to" address issues of density/FSR, privacy, solar access and street activation/articulation,
2. Working group to be formed to look at controls/issues/gaps in regard to medium density/ SEPP No 65. The working group to consist of:
 - Councillor Dennis Seage;
 - Councillor Andrew Sloan;
 - Phil Costello;
 - Kim Bray;
 - Leonardo Murgio;
 - Patrick Mahedy;
 - Mark Hitchcock.

The working group to convene as soon as possible and will report back to the next meeting.

3. It was suggested by Councillor Seage that a survey be distributed to the community seeking their input. Survey questions to be emailed to either Phil or Deb.
 4. That the Committee recommends to Council that the design principles of SEPP65 be considered for inclusion in its DCP, particularly relating to flat top housing such as the units in Manning Street.
-

4. General Business

Pheasant Point Heritage Precinct

Councillor Andrew Sloan distributed an email from residents in Fitzroy and Devonshire Streets Kiama who are seeking an amendment to the LEP to extend the Minnamurra Heritage Precinct across their 2 streets (the Quarrymen's cottages).

Kim advised that she has requested the Heritage Advisor to look into this matter and also to look at the National Trust Listing. She was of the view that too many houses had changed (not in original condition) and there was not enough evidence to have the precinct heritage listed, however this could be considered in a separate DCP.

There being no further business the meeting closed at 11:30am